



CONDOTEL FINANCING

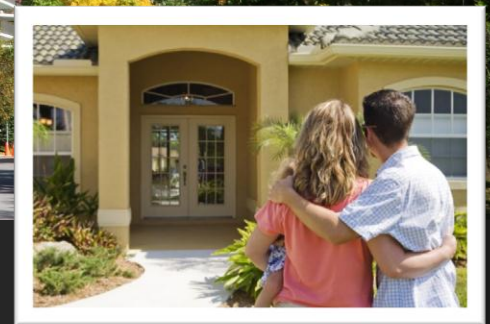
Are you a stable borrower with a good FICO score, ample assets and liquid reserves? If so, then you may be able to take advantage of one of On Q Financial Inc.'s non-agency product lines. On Q has paired up with a business partner to offer you this very unique program that can assist the qualified

Program Highlights:

- ✔ Condo-tel financing available
- ✔ 3/1, 5/1, 7/1 ARM products available, based on 1-year Constant Maturity Treasury Index
- ✔ Up to \$1MM cash in hand on cash out refinance transactions (for qualified transactions)
- ✔ Financing up to \$3MM available on all products
- ✔ Minimum 680 FICO for certain programs
- ✔ Brought to you by your local lender in Wilmington; expert in jumbo loans, client confidentiality, and skilled in navigating today's mortgage obstacles!

*Contact us today
to learn more!*

*Must become a member of this Credit Union prior to loan funding. Other restrictions may apply.



CONTACT RICHARD LYTLE FOR MORE INFORMATION TODAY!



On Q Financial, Inc. is an equal housing lender. NMLS #5645
These programs are available to only qualified borrowers. These programs are subject to change without notice.
Underwriting terms and conditions would apply to qualified borrowers. Some restrictions may apply.

On Q Financial, Inc. is licensed in the following states: Alabama Lender # 21465 | Arizona Lender # BK-0906866 | CA-BRE # 01850840 CA-DBO #603E172 | Regulated by the Division of Real Estate Colorado LMB000021795 | Florida Lender #MLD358 | Georgia Lender #22050 | Idaho #MBL-6579 | Illinois Lender #MB.6760285 | Indiana Lender #16384 | Louisiana Lender # 5645 | Maryland Lender #19585 | Massachusetts Lender #MC 5645 | New Mexico Mortgage Loan Company #03079 | North Carolina Lender #L151336 | Oregon # MI-4892 | South Carolina Lender # MLS-5645 | Tennessee Lender #4402 | Texas #5645 | Utah DRE # 8125475 | Virginia State Corporation #MC-4559 | Washington Lender #CL-5645 | Washington, D.C. Lender #MLB5645. © 2013. On Q Financial, Inc. All Rights Reserved.